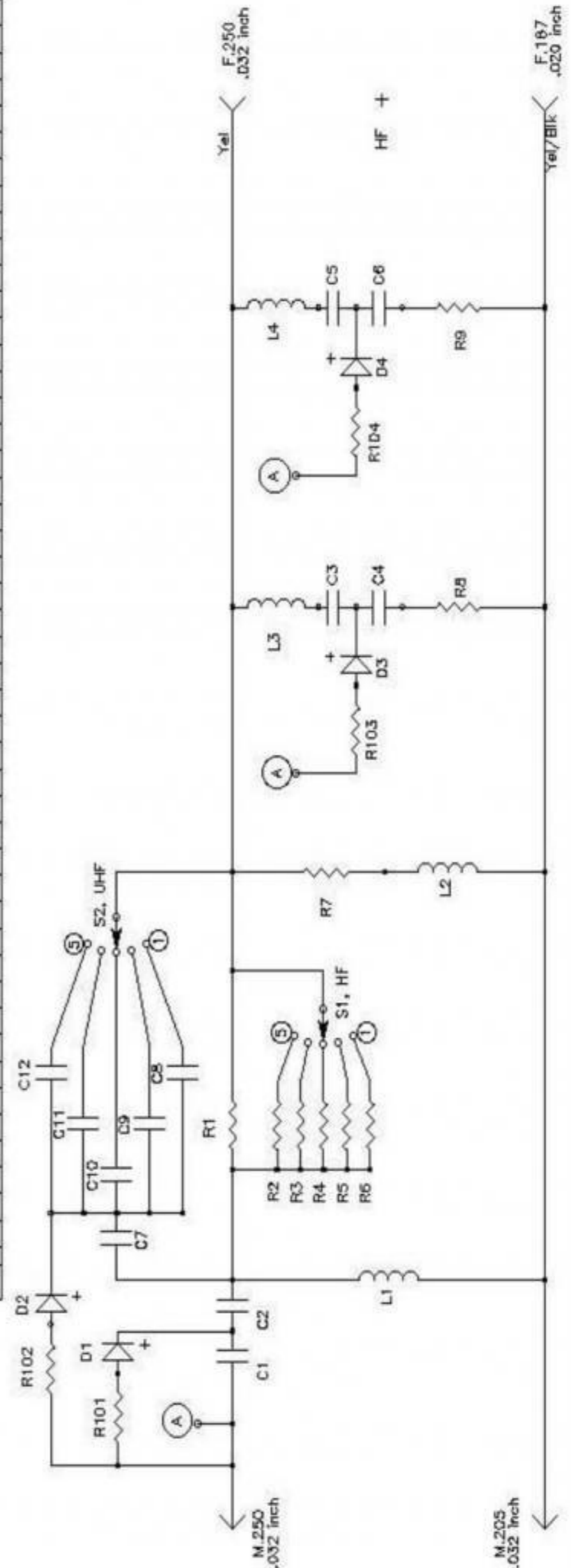


JBL 4367WX & 4367BK

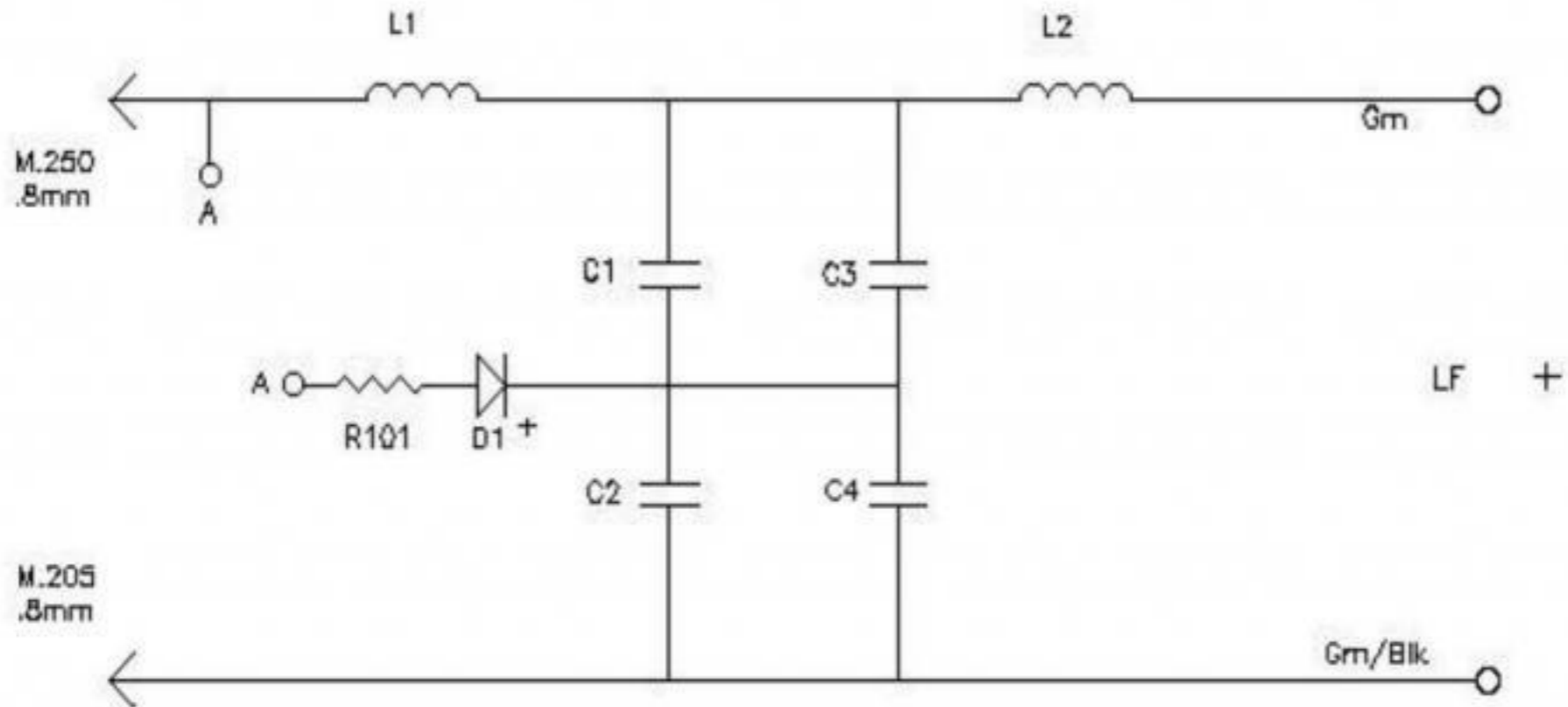
QTY	DESCRIPTION	ITEM
	CABLE TIE	
6	RMET	Ø5 X 7 mm
1	INPUT -	M205 X .032 - BOARD MOUNT
1	INPUT +	M250 X .032 - BOARD MOUNT
1	HF+, HF-	Yel, Blk - 20", 14 Ga., F.250 (.032 Inch), F.187 (.020 Inch)
1	WIRE	CLEAR OFC, SHRINK SLEEVE ENDS FOR COLOR BANDING
1	SWITCH	S1, S2 5 position, Single throw, rotary, circuit board mount
2	KNDB	JBL P/N 351688
4	DIODE	D1 - D4 IN4935
4	R101-R104	10k Ohm ± 10%, 1/4 W metal or carbon film
1	R9	3.6 Ohm ± 5 %, 5 W, Wirewound, Metal Legs
1	R8	3.9 Ohm ± 5 %, 5 W, Wirewound, Metal Legs
1	R7	3.6 Ohm ± 5 %, 10 W, Wirewound, Metal Legs
1	R6	13 Ohm ± 5 %, 5 W, Wirewound, Metal Legs
1	R5	15 Ohm ± 5 %, 5 W, Wirewound, Metal Legs
1	R4	16 Ohm ± 5 %, 5 W, Wirewound, Metal Legs
1	R3	18 Ohm ± 5 %, 5 W, Wirewound, Metal Legs
1	R2	20 Ohm ± 5 %, 5 W, Wirewound, Metal Legs
1	RESISTOR	R1 20 Ohm ± 5 %, 5 W, Wirewound, Metal Legs
1	L4	0.75 mH ± 5 %, Air Core, DCR < 0.5 Ohm
1	L3	0.3 mH ± 5 %, Air Core, DCR < 0.3 Ohm
1	L2	0.2 mH ± 5 %, Air Core, DCR < 0.2 Ohm
1	COIL	L1 1.2 mH ± 5 %, Air Core, DCR < 0.5 Ohm
1	C12	2.0 uF ± 5 %, 100 V Polypropylene
1	C11	1.5 uF ± 5 %, 100 V Polypropylene
1	C10	1.2 uF ± 5 %, 100 V Polypropylene
1	C9	0.82 uF ± 5 %, 100 V Polypropylene
1	C8	0.51 uF ± 5 %, 100 V Polypropylene
1	C7	12 uF ± 5 %, 100 V Polypropylene
1	C5, C6	30 uF ± 5 %, 100 V Polypropylene
1	C3, C4	18 uF ± 5 %, 100 V Polypropylene
1	CAPACITOR	C1, C2 39 uF ± 5 %, 100 V Polypropylene
1	PCB	FR4, BLUE - 1 Oz COPPER TRACE

LIST OF MATERIAL (-001)



JBL 4367WX & 4367BK

SCHEMATIC -002



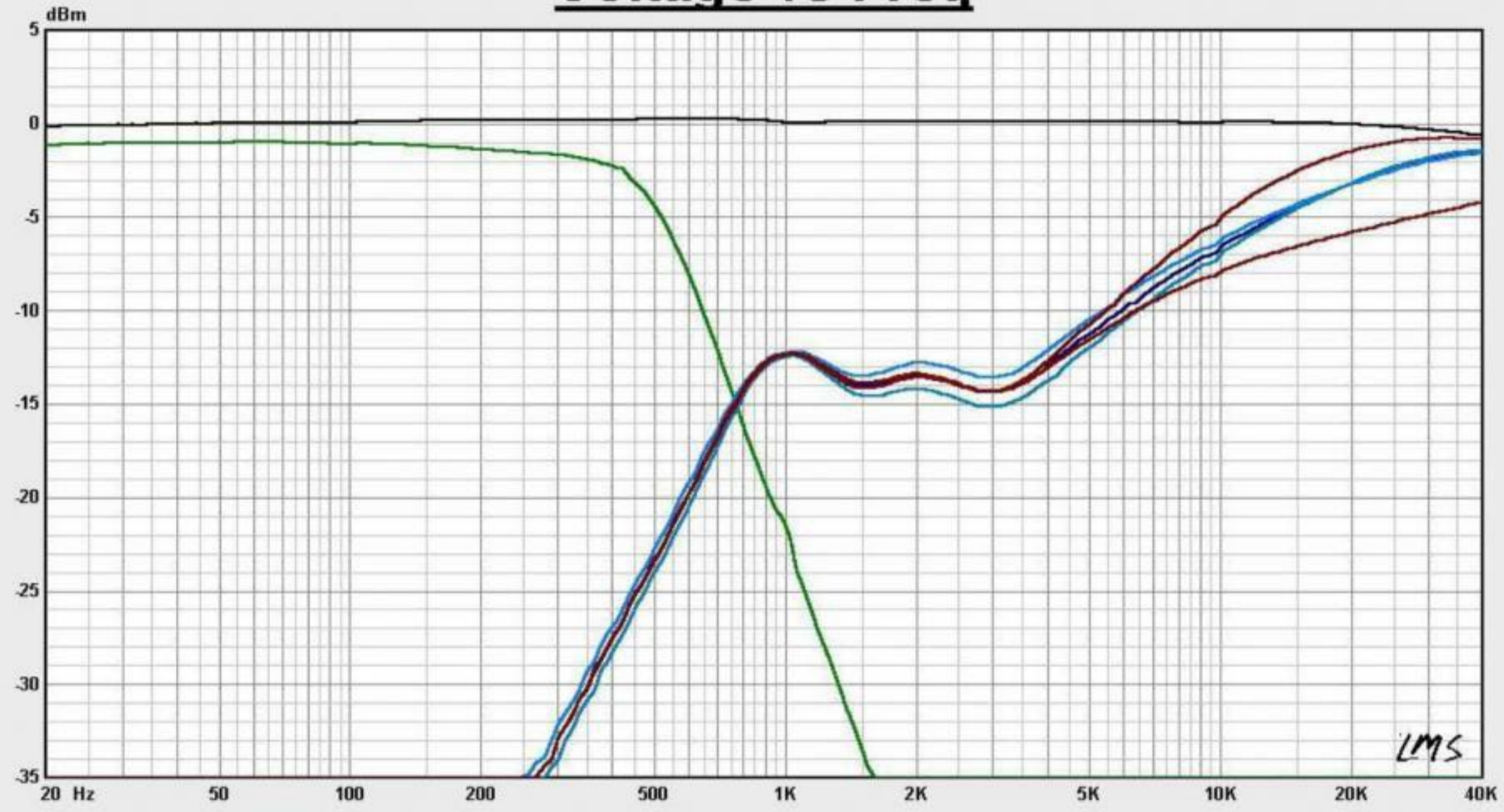
400-0550-002

1	BASE BOARD		10 - 12 mm MDF, paint or stain black
5	CABLE TIE		L1 and L2
4	PCB STAND		
1	INPUT -	Blk	M.205 Board Mount Terminal (.032")
1	INPUT +	Red	M.250 Board Mount Terminal (.032")
1	LF -	Grn/Blk	20", Stripped and tinned 0.25 inch
1	LF +	Grn	20", Stripped and tinned 0.25 inch
	WIRE		14 Gauge, OFC, Clear jacket with colored tubing for color marking
1	DIODE	D1	IN 4935
1	RESISTOR	R101	10k Ohm ± 10%, 1/4 W Metal Oxide or Metal Film
1	CAPACITOR	C4	9.0 uF ± 5%, 100 V Polypropylene
		C3	9.0 uF ± 5%, 100 V Polypropylene
		C2	91 uF ± 5%, 100 V NPE, DF < 4%
		C1	91 uF ± 5%, 100 V NPE, DF < 4%
1	COIL	L2	2.0 mH ± 5%, Air Core, DCR < 0.4 Ohm
1	COIL	L1	4.6 mH ± 5%, Air Core, DCR < 0.6 Ohm
1	PCB		FR4, Blue - 1 Oz Copper Trace, 4.72" x 2.36"
QTY	DESCRIPTION	ITEM	

LIST OF MATERIAL

JBL 4367WX & 4367BK

Voltage vs Freq



1: Ref	6: HF +	9: UHF -
4: LF, 8 Ohm Load	7: HF -	
5: HF, 8 Ohm Load	8: UHF +	

Notes

LMS 4.6.0.371
May/29/2007

Person:
Company:

Project:
File: 4367.lib

Apr 28, 2015
Tue 9:55 am



Engineering Standard
Frequency Response

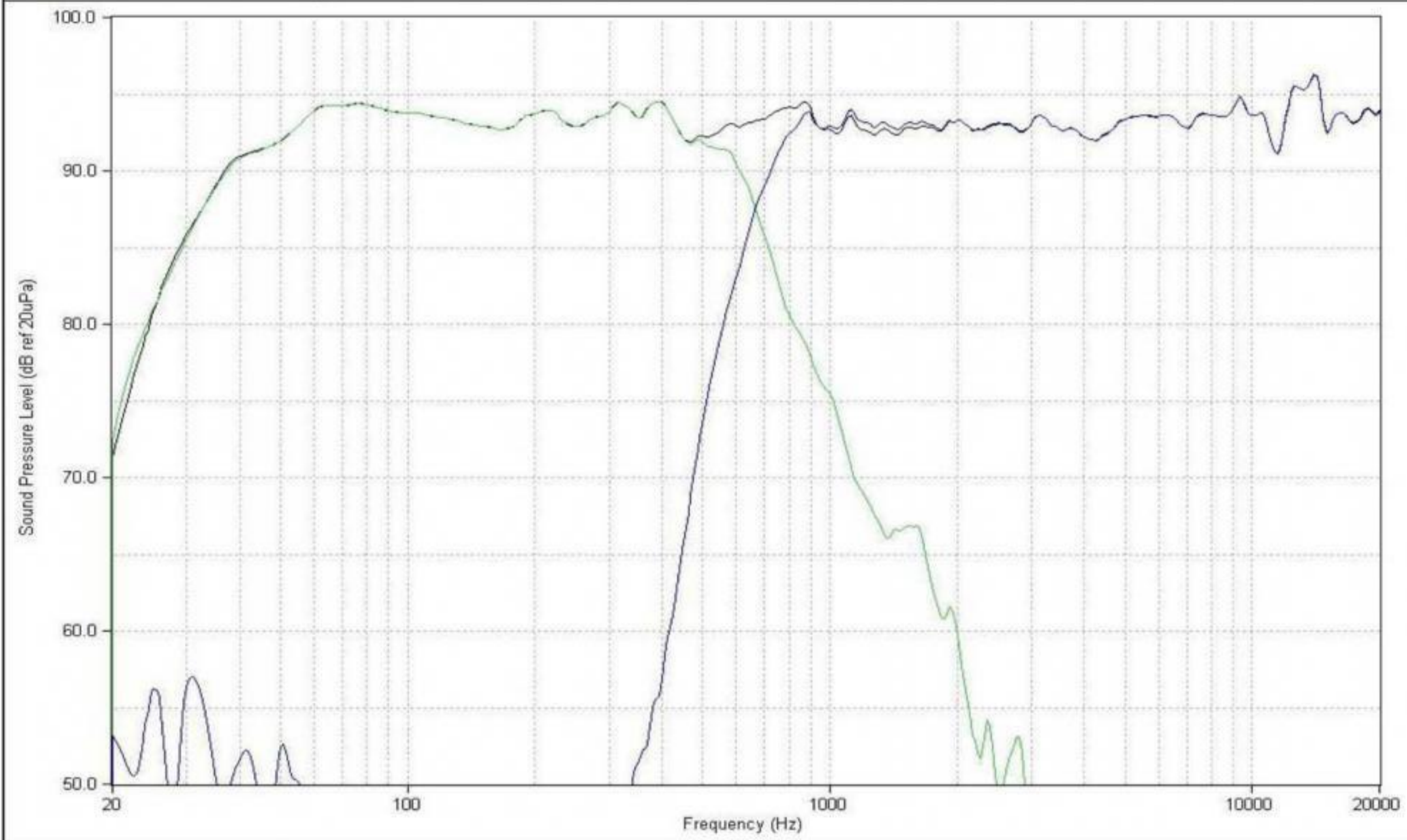
Date
9/7/2015

Rev #
A

Document Number
990-0873

JBL 4367WX & 4367BK

HARMAN Audio Test System



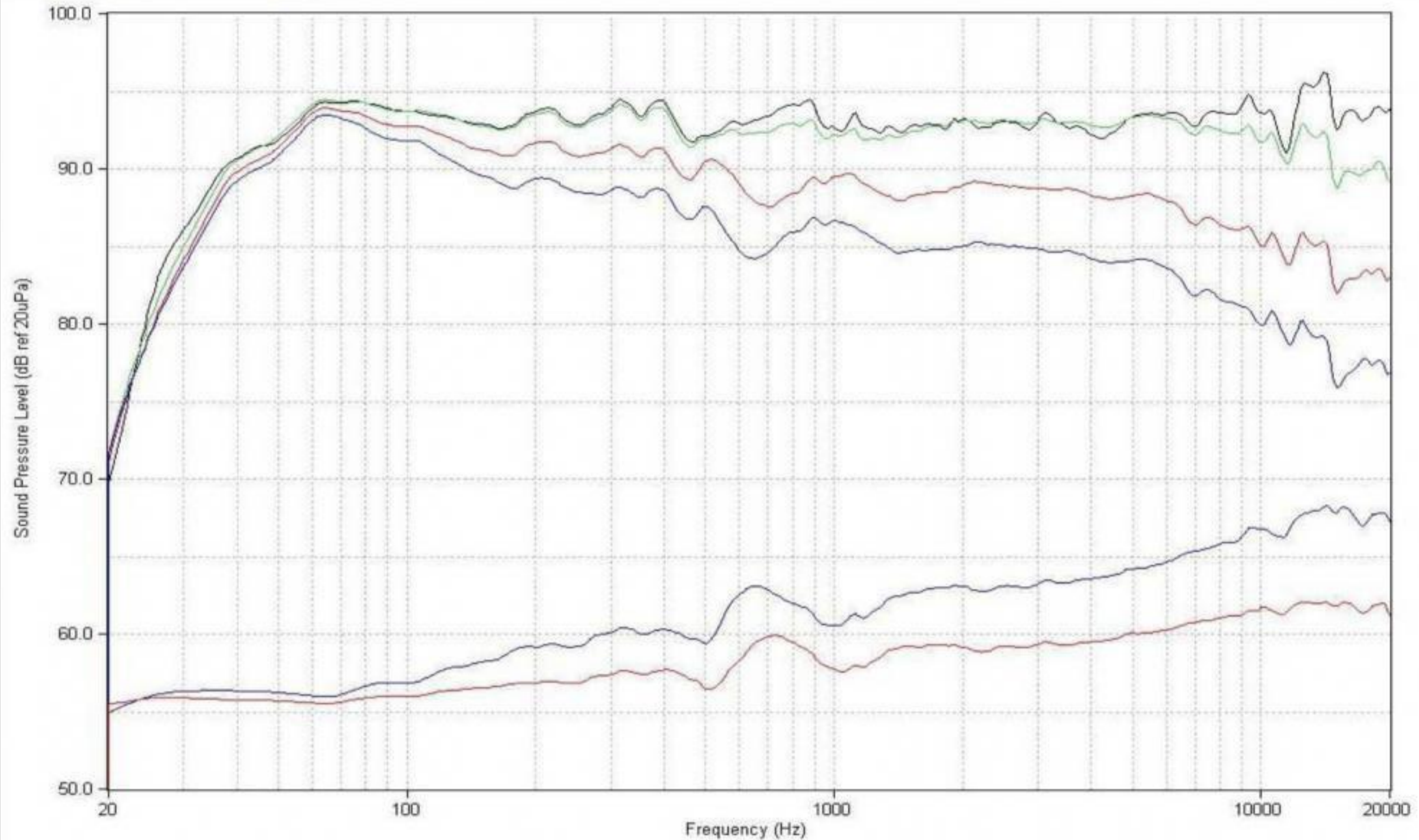
4367 On-Axis

- 34: 4367 Rev.2
- 35: 4367 LF Rev.2
- 36: 4367 HF Rev.2

Greg - 4/30/2015 7:58:07 AM - C:\Documents and Settings\Harman\Desktop\Hats Files\HATS User Folders\Greg\4367\4367.hats

JBL 4367WX & 4367BK

HARMAN Audio Test System



4367 Sound Power

- 80: On Axis
- 81: Window
- 82: First Reflections
- 83: Total Sound Power
- 84: Total Sound Power DI
- 85: First Reflections DI

Greg - 4/30/2015 8:32:38 AM - C:\Documents and Settings\Harman\Desktop\Hats Files\HATS User Folders\Greg\4367\4367 Spin.hats

Engineering Standard
Impedance

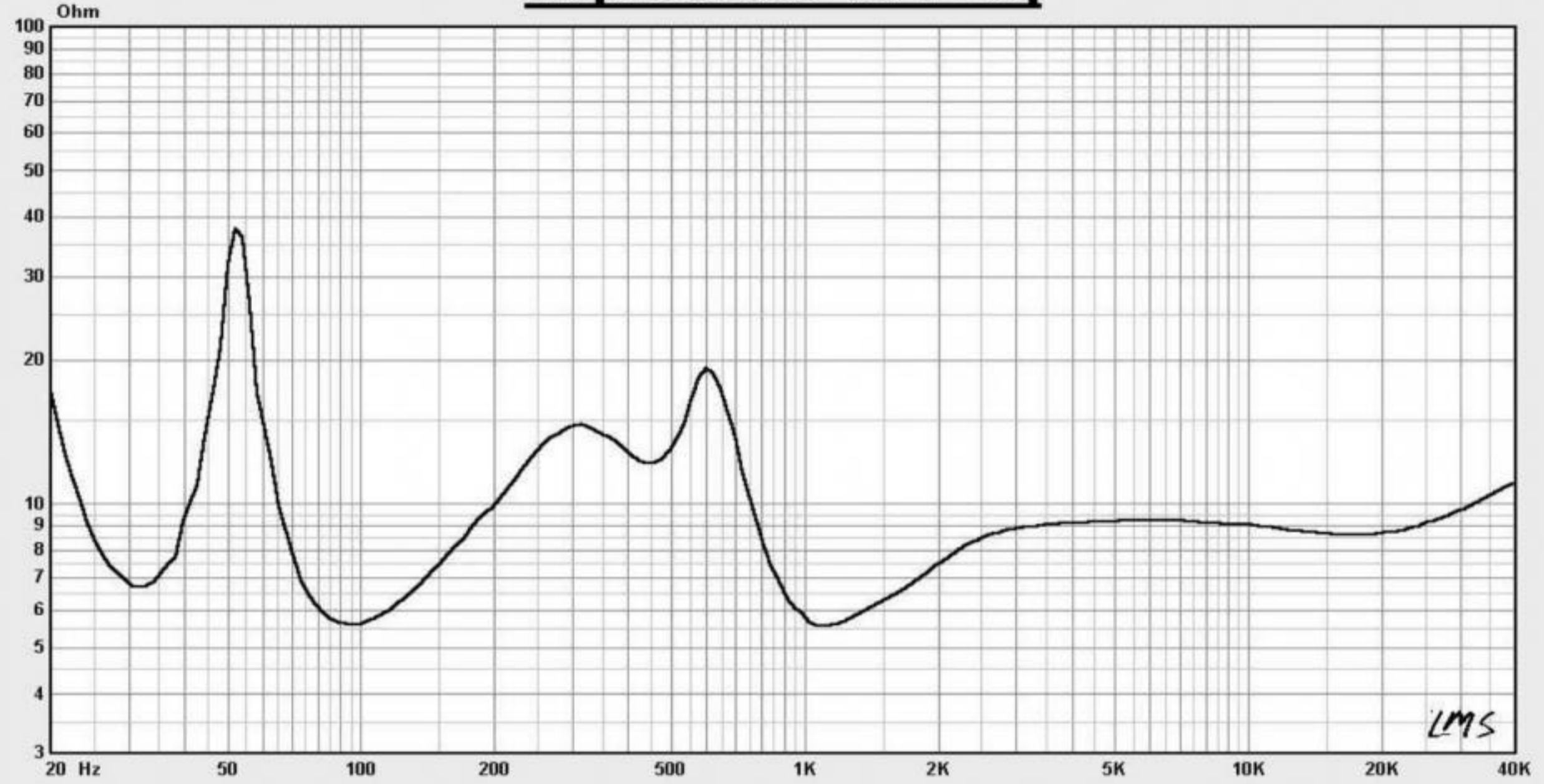
Date
9/7/2015

Rev #
A

Document Number
990-0873

JBL 4367WX & 4367BK

Impedance vs Freq



Map — 10: 4367 Impedance

Notes

LMS 4.6.0.371
May/29/2007

Person:
Company:

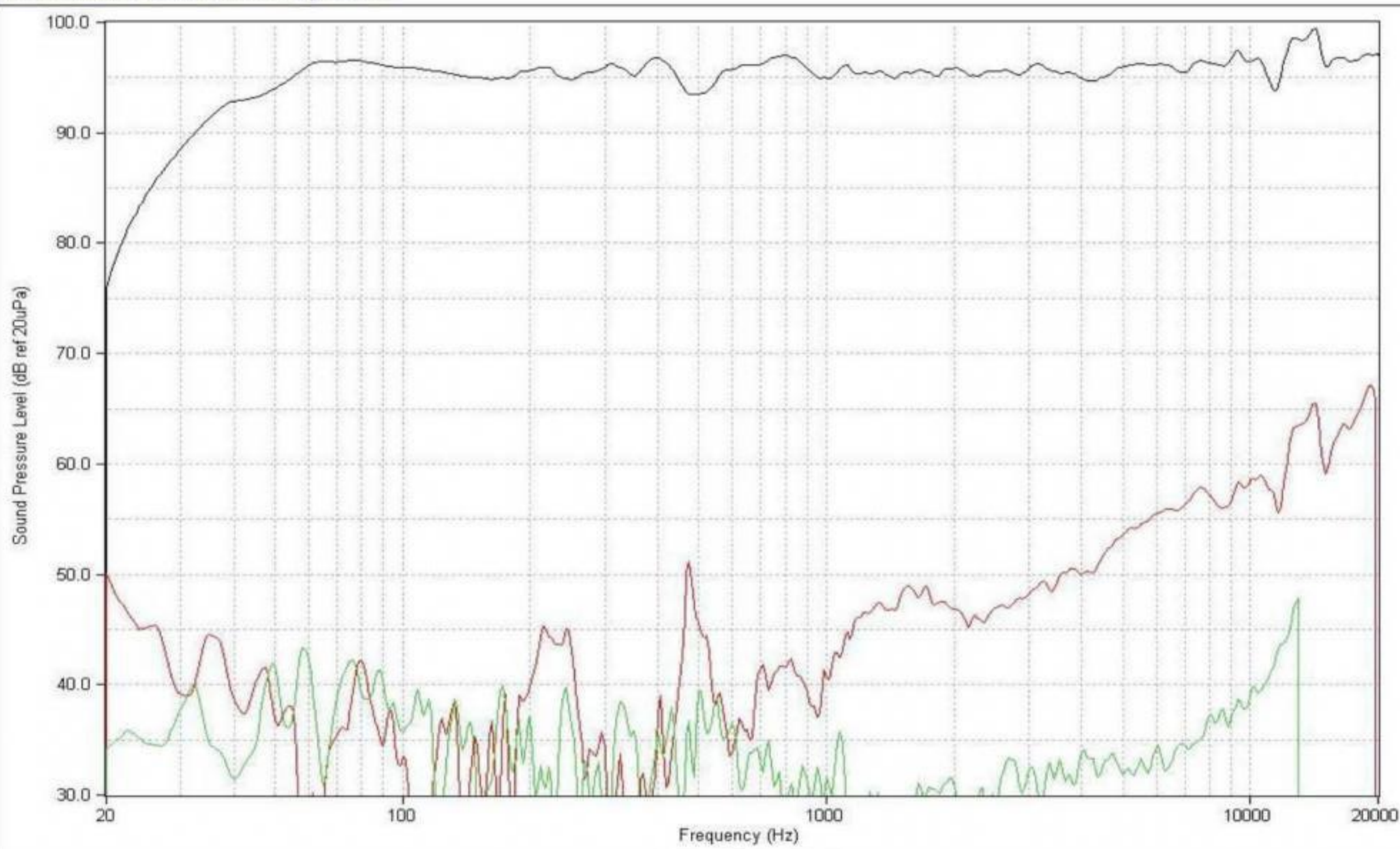
Project:
File: 4367.lib

Apr 28, 2015
Tue 9:56 am

LINEAR X
S I S T E M S

JBL 4367WX & 4367BK

HARMAN Audio Test System



4367 Distortion @ 96 dB

- 31: 4367 Distortion @ 96 dB
- 32: D2*
- 33: D3*

Greg - 4/30/2015 8:03:03 AM - C:\Documents and Settings\Harman\Desktop\Hats Files\HATS User Folders\Greg\4367\4367.hats